



CALIFORNIA'S PREMIER
RETAIL BROKER

FOR SALE

SWC Hwy 86 & 78 (1st & Main St)
Brawley, CA (Imperial County)



Available

- 22,651 square feet of land
- Drive Thru Possible
- Corner Signage Potential
- Center of Town Intersection

Demographic Highlights

- 2 mile Population 24,422
- 2 mile Median Household Income \$40,444

FOR MORE INFORMATION PLEASE CONTACT:

Joe Wojdowski
jwojdowski@epsteensd.com
Lic #01237995



9524 Kearny Villa Rd, Suite 203, San Diego, CA 92126
Phone (858) 536-8383 Fax (858) 536-8384
www.epsteen.com

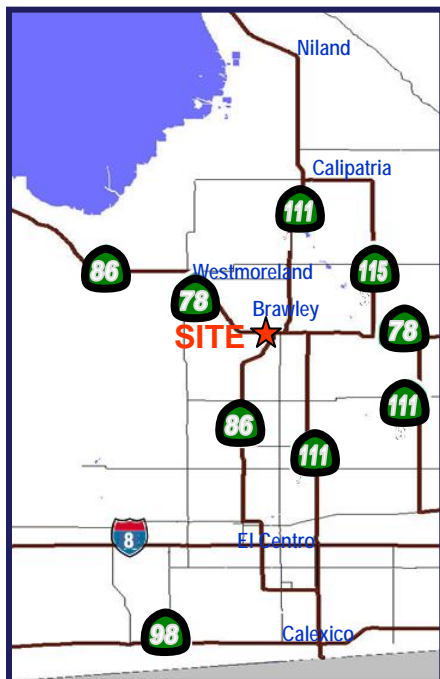
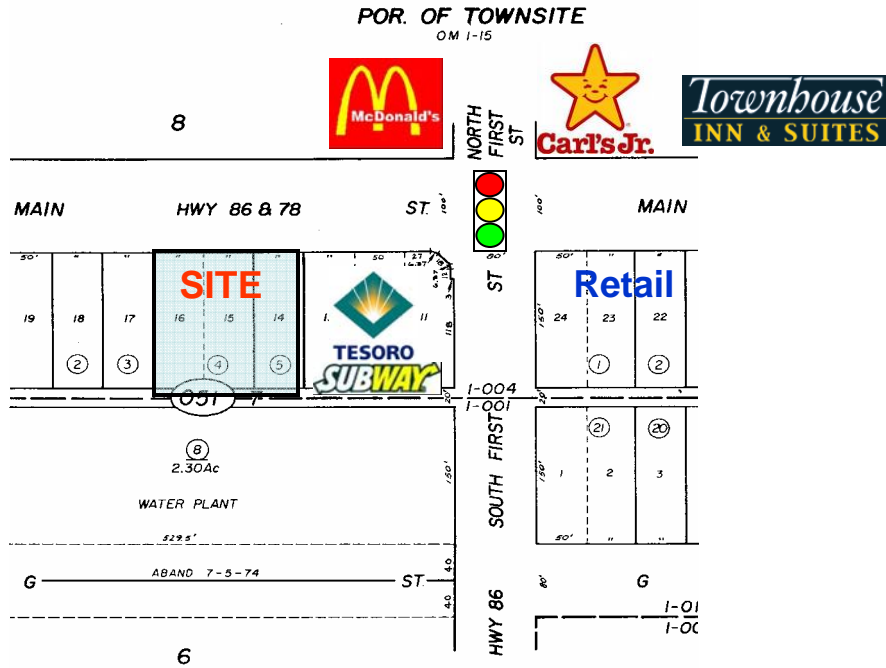
The information contained herein, while obtained from sources believed to be reliable is not guaranteed.



CALIFORNIA'S PREMIER
RETAIL BROKER

Parcel & Area Map

APN 048-051-04 & 05
Brawley, CA 92227



Joe Wojdowski
jwojowski@epsteensd.com
Lic #01237995

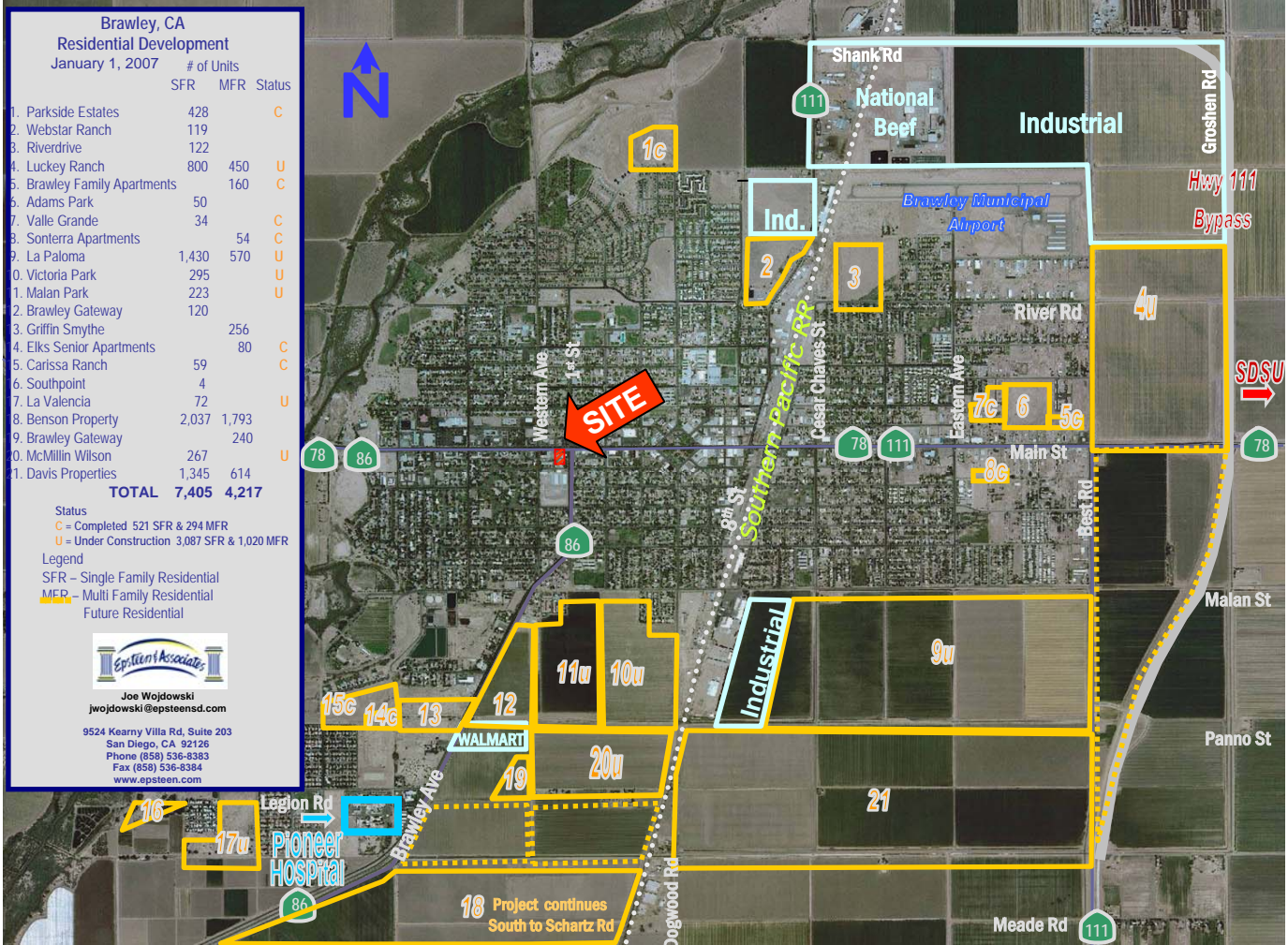
9524 Kearny Villa Rd, Suite 203
San Diego, CA 92126
Phone (858) 536-8383
Fax (858) 536-8384
www.epsteen.com



**CALIFORNIA'S PREMIER
RETAIL BROKER**

AERIAL

**SWC Hwy 86 & 78 (1st & Main St)
Brawley, CA 92227**



FOR MORE INFORMATION PLEASE CONTACT:

Joe Wojdowski
jwojdowski@epsteensd.com
 Lic #01237995

9524 Kearny Villa Rd, Suite 203, San Diego, CA 92126
 Phone (858) 536-8383 Fax (858) 536-8384
 www.epsteen.com

The information contained herein, while obtained from sources believed to be reliable is not guaranteed.

SUMMARY DEMOGRAPHIC PROFILE

1990 - 2000 Census, 2010 Estimates & 2015 Projections

Calculated using Proportional Block Groups

Prepared For Epstein & Associates



Lat/Lon: 32.978471/-115.541825

RS1

| BRAWLEY 1st St & Main St | | 1.00 mi radius | 2.00 mi radius | 3.00 mi radius | 5.00 mi radius |
|---|---|---------------------------|---------------------------|---------------------------|---------------------------|
| POPULATION | 2010 Estimated Population | 11,763 | 24,422 | 25,480 | 25,892 |
| | 2015 Projected Population | 12,234 | 26,659 | 27,857 | 28,283 |
| | 2000 Census Population | 10,692 | 21,367 | 22,203 | 22,568 |
| | 1990 Census Population | 9,779 | 18,666 | 19,154 | 19,524 |
| | Historical Annual Growth 1990 to 2010 | 1.0% | 1.5% | 1.7% | 1.6% |
| | Projected Annual Growth 2010 to 2015 | 0.8% | 1.8% | 1.9% | 1.8% |
| | 2010 Median Age | 29.8 | 28.3 | 28.4 | 28.5 |
| HOUSEHOLDS | 2010 Estimated Households | 3,835 | 7,608 | 7,953 | 8,090 |
| | 2015 Projected Households | 4,041 | 8,410 | 8,808 | 8,951 |
| | 2000 Census Households | 3,376 | 6,421 | 6,683 | 6,800 |
| | 1990 Census Households | 3,165 | 5,699 | 5,862 | 5,974 |
| | Historical Annual Growth 1990 to 2010 | 1.1% | 1.7% | 1.8% | 1.8% |
| | Projected Annual Growth 2010 to 2015 | 1.1% | 2.1% | 2.2% | 2.1% |
| POPULATION BY RACE | 2010 Estimated White | 92.3% | 91.9% | 91.9% | 92.0% |
| | 2010 Estimated Black or African American | 2.9% | 3.3% | 3.2% | 3.2% |
| | 2010 Estimated Asian & Pacific Islander | 2.2% | 2.1% | 2.2% | 2.2% |
| | 2010 Estimated American Indian & Native Alaskan | 1.6% | 1.6% | 1.6% | 1.6% |
| | 2010 Estimated Other Races | 1.0% | 1.1% | 1.1% | 1.1% |
| | 2010 Estimated Hispanic | 74.5% | 79.9% | 79.2% | 78.8% |
| INCOME | 2010 Estimated Average Household Income | \$ 52,727 | \$ 48,320 | \$ 49,242 | \$ 49,802 |
| | 2010 Estimated Median Household Income | \$ 43,074 | \$ 40,444 | \$ 41,358 | \$ 41,422 |
| | 2010 Estimated Per Capita Income | \$ 17,385 | \$ 15,177 | \$ 15,488 | \$ 15,687 |
| EDUCATION (AGE 25+) | 2010 Elementary | 18.6% | 21.7% | 21.3% | 21.3% |
| | 2010 Some High School | 17.0% | 17.4% | 17.0% | 17.0% |
| | 2010 High School Graduate | 23.4% | 23.0% | 22.9% | 22.9% |
| | 2010 Some College | 22.0% | 21.2% | 21.6% | 21.6% |
| | 2010 Associates Degree Only | 6.5% | 6.2% | 6.4% | 6.4% |
| | 2010 Bachelors Degree Only | 9.2% | 7.6% | 7.9% | 7.9% |
| | 2010 Graduate Degree | 3.4% | 2.8% | 3.0% | 3.0% |
| BUSINESS | Number of Businesses | 382 | 625 | 659 | 680 |
| | Total Number of Employees | 3,101 | 6,462 | 7,142 | 7,418 |
| | Employee Population per Business | 8.1 | 10.3 | 10.8 | 10.9 |
| | Residential Population per Business | 30.8 | 39.1 | 38.7 | 38.1 |

This report was produced using data from private and government sources deemed to be reliable. The information herein is provided without representation or warranty.