



461

N. RODEO DR.
BEVERLY HILLS

Sublease

GROUND FLOOR

2,228SF

LOWER LEVEL

SELLING

2,131SF

461

N. RODEO DR.
BEVERLY HILLS

MAP OVERVIEW



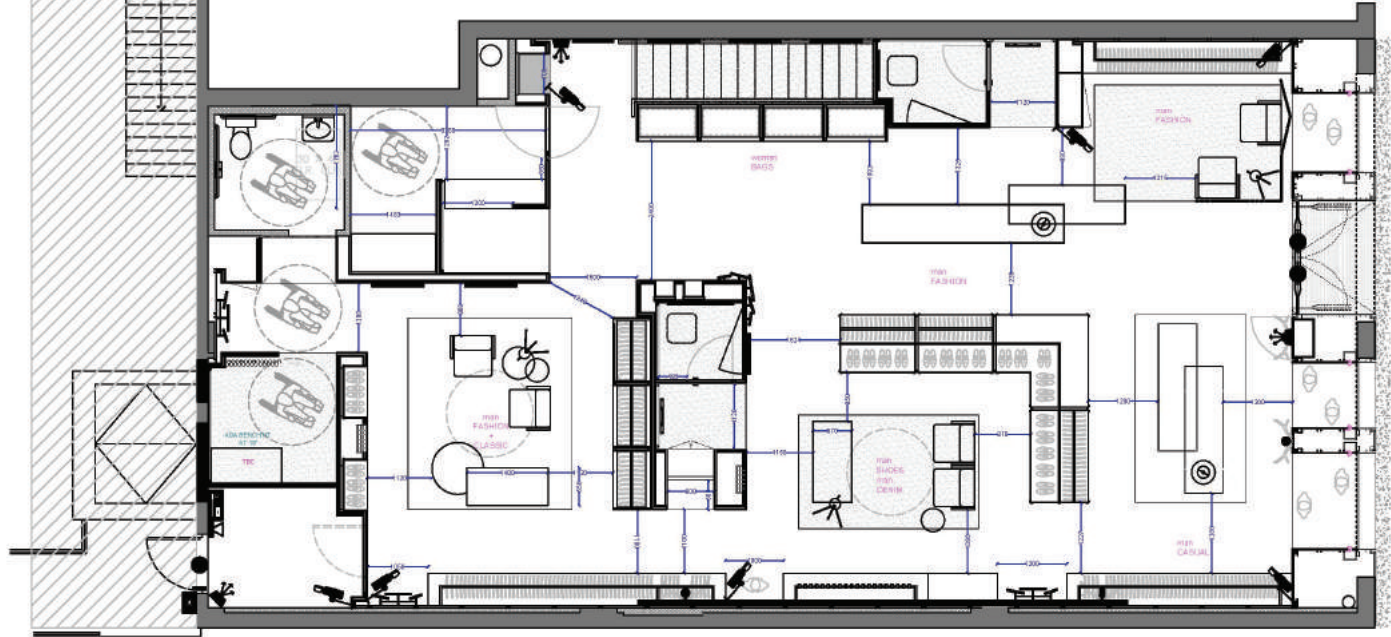
The information contained herein has been obtained from sources we deem reliable. While we have no reason to doubt its accuracy, we do not guarantee it. All measurements, facts and drawings shown are approximate, subject to change, and should be independently verified, as they are not to be relied upon as a precise representation from this office.

461

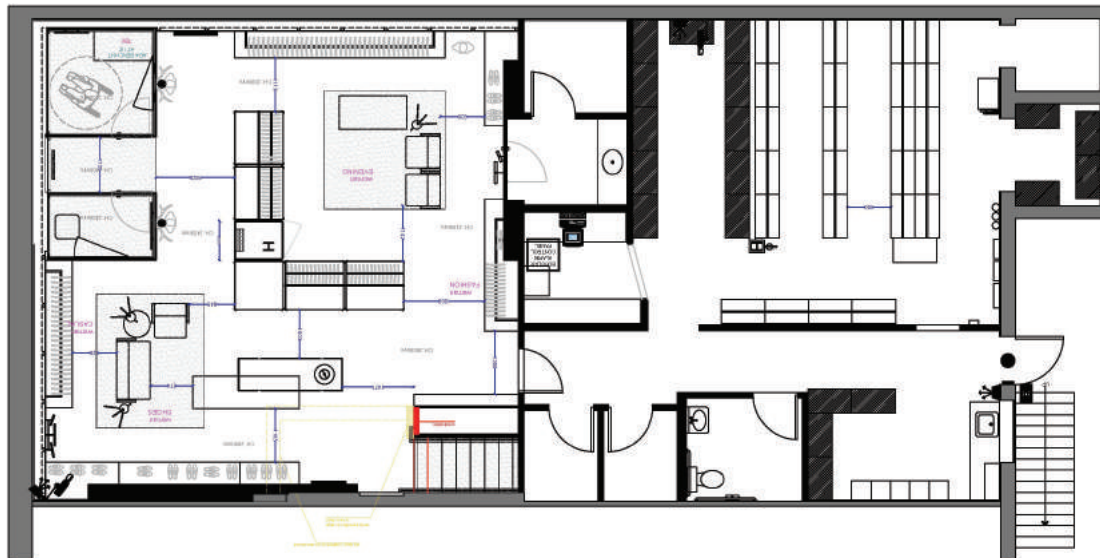
N. RODEO DR.
BEVERLY HILLS

SITE PLAN

GROUND FLOOR
SUBLEASE
2,228 SF



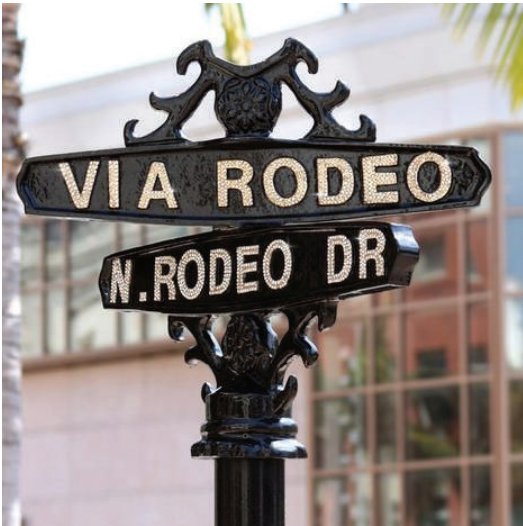
LOWER LEVEL
SELLING
2,131 SF



The information contained herein has been obtained from sources we deem reliable. While we have no reason to doubt its accuracy, we do not guarantee it. All measurements, facts and drawings shown are approximate, subject to change, and should be independently verified, as they are not to be relied upon as a precise representation from this office.

INTERIOR PHOTOS





FOR LEASE

461

N. RODEO DR.

BEVERLY HILLS

461 North Rodeo Drive is located in Southern California's premier retail destination. Rodeo drive is considered the epicenter of luxury retail and world renowned restaurants drawing a local and global clientele.

CONTACT

PARKS LANDON

BRE:01412290

310.451.8171 EXT:243

310.500.5005

PLANDON@EPSTEEN.COM

JACK FARLO

BRE:02067149

310.451.8171 EXT:220

JFARLO@EPSTEEN.COM

JOE MASTROMONACO

212.687.2400 EXT:223

914.486.8848

JMASTROMONACO@DARTCO.COM

FRITZ KEMERLING

212.687.2400 EXT:225

203.253.9830

FRITZ@DARTCO.COM

The information contained herein has been obtained from sources we deem reliable. While we have no reason to doubt its accuracy, we do not guarantee it. All measurements, facts and drawings shown are approximate, subject to change, and should be independently verified, as they are not to be relied upon as a precise representation from this office.