

LAKEWOOD PLAZA

NWC SPRING ST. & PALO VERDE AVE

RESTAURANT | MEDICAL | SERVICE | RETAIL AVAILABLE



Please Contact

VIC MONTALBO

310.451.8171 X230

VMONTALBO@EPSTEEN.COM

BRE LIC: 00927723

JACK FARLO

310.451.8171 X220

JFARLO@EPSTEEN.COM

BRE LIC: 02067149

FOUNDING
MEMBER | **CHAINLINKS**
RETAIL ADVISORS

This information is deemed reliable, but not guaranteed. All information should be independently verified for its accuracy and completeness before relying upon it.

PROPERTY HIGHLIGHTS



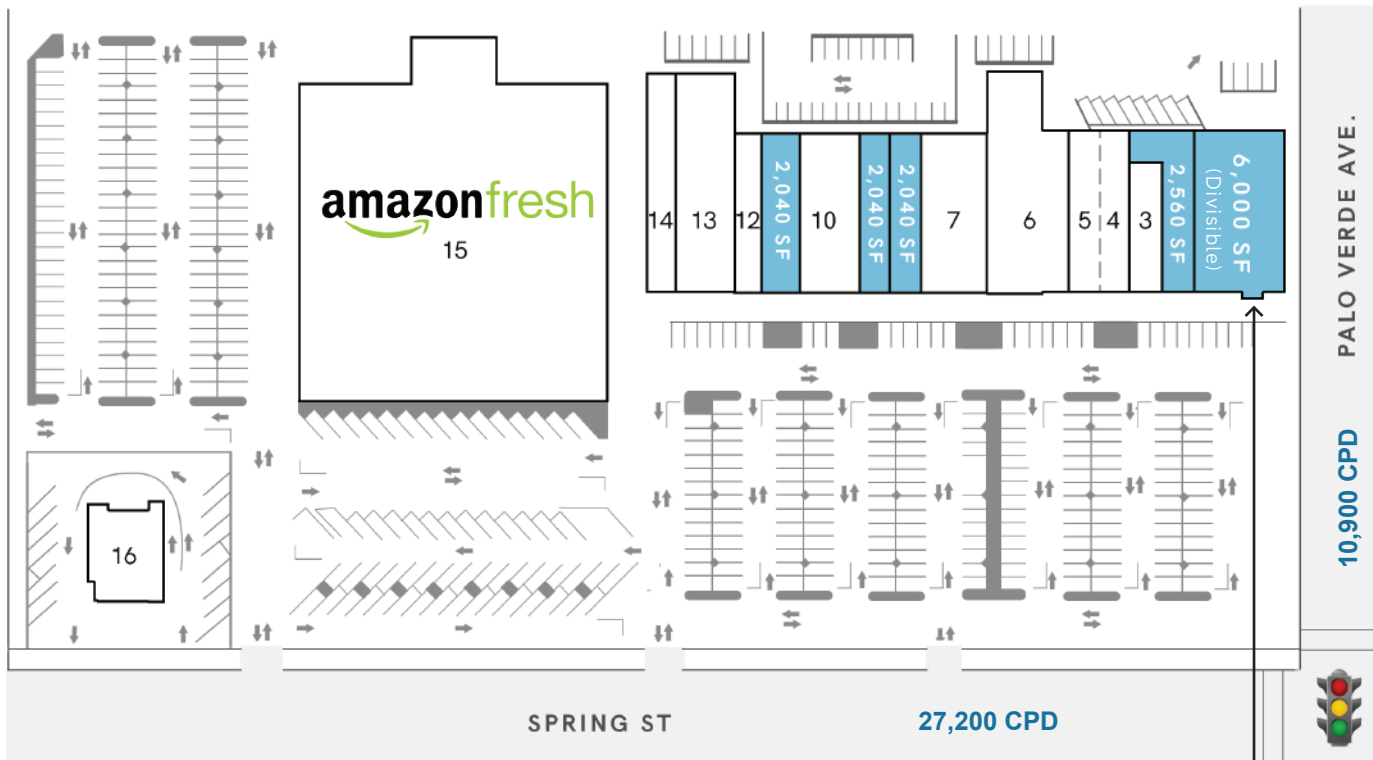
- + Established community center completely restored
- + Highly visible shop spaces available
- + Signalized intersection
- + Easy street access
- + Prominent pylon and monument signage throughout
- + Office and Medical influence immediate
- + CPD: Spring Street: 31,447 | Palos Verdes: 17,853

+ Join:      PACIFIC DENTAL SERVICES



This information is deemed reliable, but not guaranteed. All information should be independently verified for its accuracy and completeness before relying upon it.

SITE PLAN

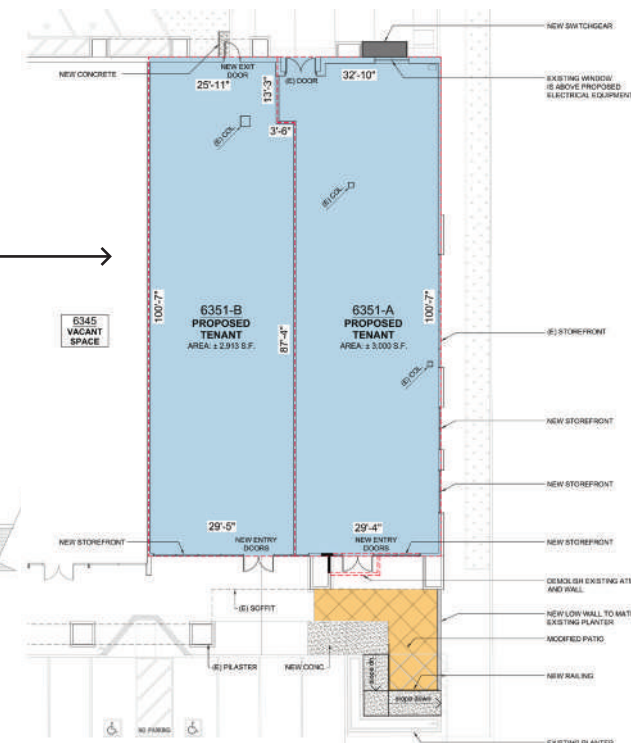
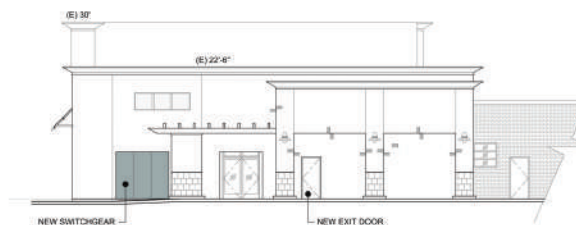
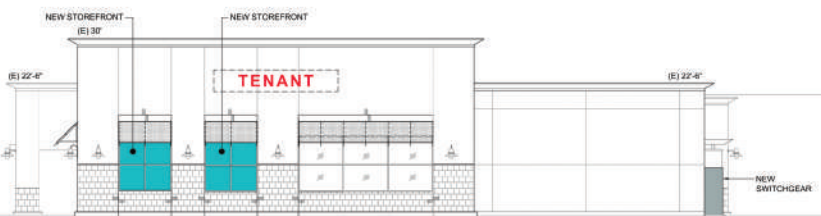


1. Available | 6,000 SF (Divisible)
2. Available | 2,560 SF
3. Subway | 1,540 SF
- 4-5. Pacific Dental | 2,040 SF *Just Leased*
6. Anytime Fitness | 6,940 SF *Just Leased*
7. Petco Unleashed | 4,640 SF
8. Available | 2,040 SF
9. Available | 2,040 SF
10. Grounds Coffee & Bakery | 4,080 SF
11. Available | 2,040 SF *Restaurant Ready Space*
12. Bamboo Nails | 2,040 SF
13. Available | 6,400 SF
14. H&R Block | 2,000 SF *Recently Renewed*
15. Amazon Fresh | 42,089 SF
16. John's Hamburger | 2,453 SF

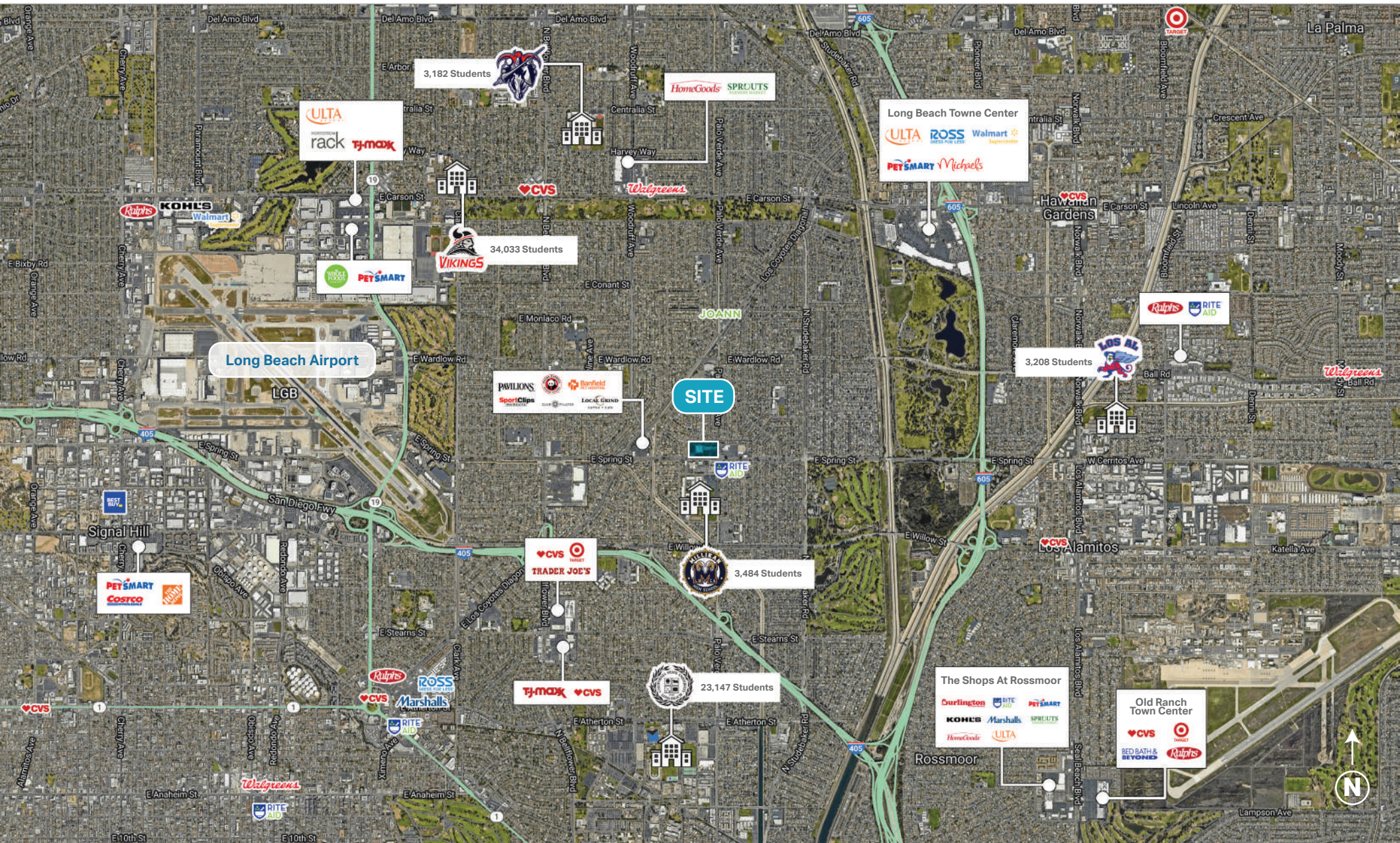
Total GLA (91,522 SF)



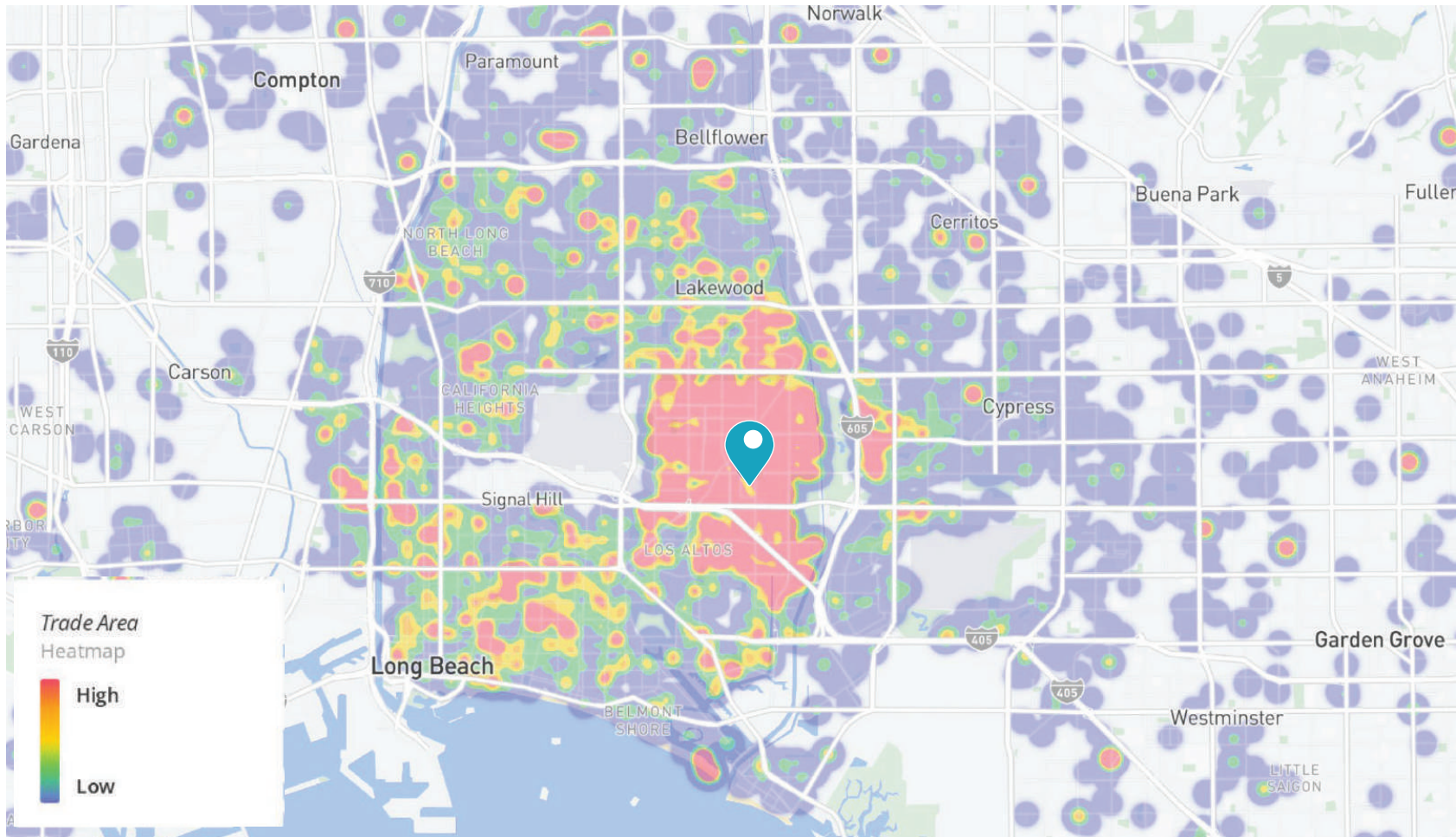
① SOUTH ELEVATION (FRONT)
SCALE: 1/16" = 1'-0"








2-MILE RETAIL AERIAL



MARKET LANDSCAPE



DEMOGRAPHICS:	 Population	 Daytime Population	 Households	 Med. Household Income	 Avg. Household Income
1 MILE	18,815	5,096	7,378	\$136,581	\$170,603
2 MILE	65,068	19,814	24,564	\$128,311	\$167,329
3 MILE	169,819	72,610	62,550	\$116,536	\$153,572