

# Plaza Laguna Woods

SEC Moulton Parkway & Ridge Route Dr, Laguna Woods, CA



## Property Highlights

- Shop space for Lease
- 15,000 sf ft of shops; part of Public Storage facility
- Over 50,000 cars/day on Moulton Parkway
- Move-in ready spaces - vanilla shell condition
- Over 100,000 daytime employees within 3 miles

## For further information please contact:

Austin Cole  
BRE# 02099736  
(310) 451-8171 ext. 251  
[acole@epsteen.com](mailto:acole@epsteen.com)

Cameron Crowner  
BRE# 00924460  
(310) 694-9455  
[cameron.crowner@matthews.com](mailto:cameron.crowner@matthews.com)



FOUNDING  
MEMBER | CHAINLINKS  
RETAIL ADVISORS

**MATTHEWS**  
REAL ESTATE INVESTMENT SERVICES

This information is deemed reliable, but not guaranteed. All information should be independently verified for its accuracy and completeness before relying upon it.

# Plaza Laguna Woods

## SITE PLAN

- Suite 101 – 1,732 SF – Maple Cabinet Group
- Suite 102 + 104 – 3,519 SF – Dance Studio
- Suite 105 – 1,497 SF – Jolly Tots Children's Boutique
- Suite 106 – 1,403 SF – The Pizza Guys
- Suite 107 – 1,220 SF – Ivy Rose Florist
- Suite 108 – 976 SF – **Available**
- Suite 109 – 976 SF – Prime Home Renovations
- Suite 110 + 111 – 1,952 SF – Stage 21 Bikes
- Suite 112 – 1,220 SF – Gold Cards & Coins
- Suite 113 – 1,403 SF – **Available**





Moulton  
Parkway  
50,000 + CPD



**Suite 113**

# Plaza Laguna Woods

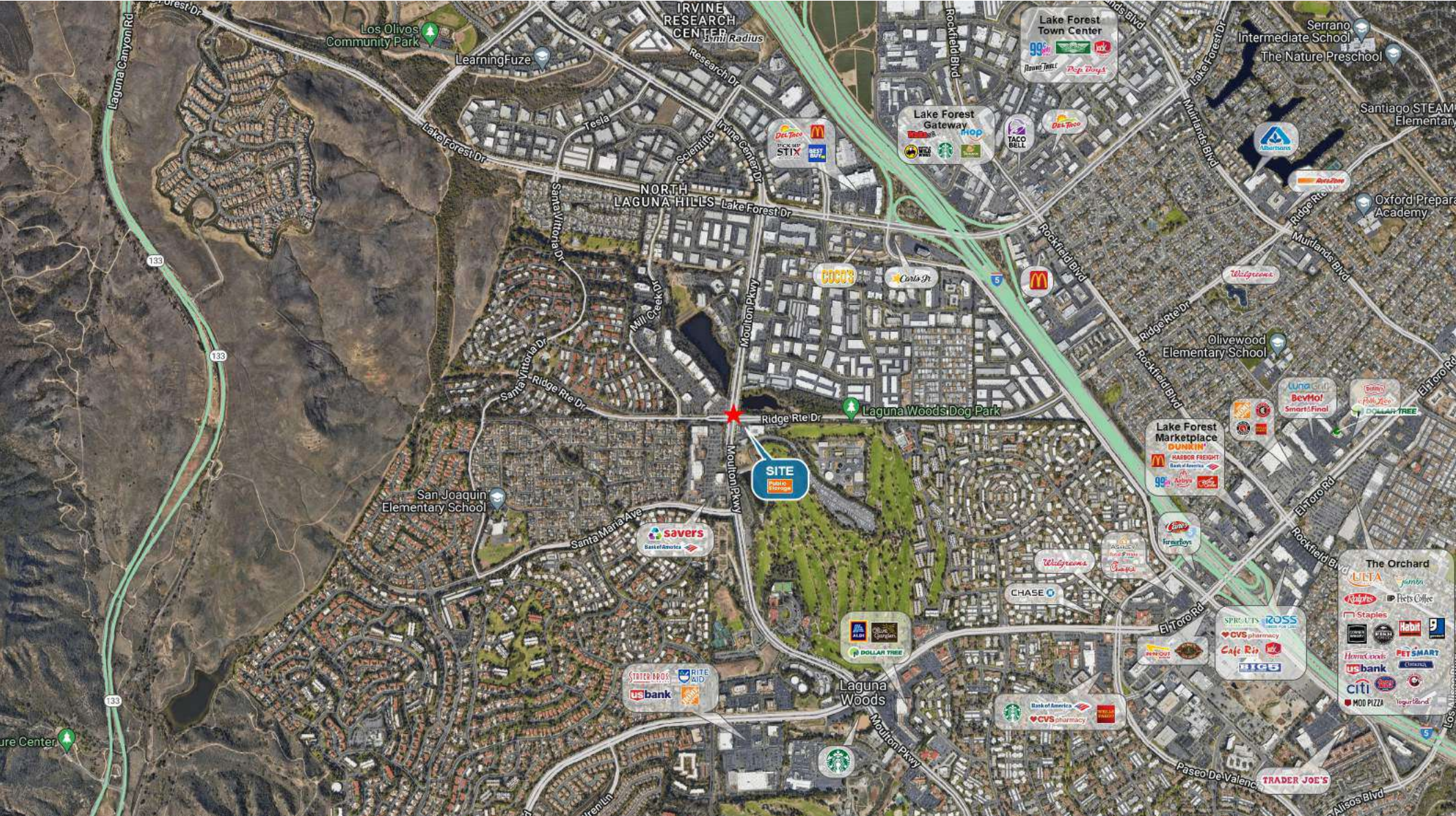


**Suite 108**

- Center is at the confluence of strong daytime population and growing residential housing
- Plentiful parking
- Building and monument signage available

# Plaza Laguna Woods

SEC Moulton Parkway & Ridge Route Dr, Laguna Woods, CA



### Demographics



1 Mile	10,929
2 Mile	50,197
3 Mile	119,044



1 Mile	27,348
2 Mile	51,844
3 Mile	111,880



1 Mile	\$66,964
2 Mile	\$79,151
3 Mile	\$93,880

### Traffic Counts



Moulton Pkwy	(North) 26,000 CPD
	(South) 29,000 CPD
Ridge Route Dr	(East) 7,000 CPD
	(West) 4,000 CPD

This information is deemed reliable, but not guaranteed. All information should be independently verified for its accuracy and completeness before relying upon it.