

KOHL'S PAD SITE - GROUND LEASE ONLY

39850 10th St W, Palmdale, CA 93551 (#753)



AREA ANCHORS:

JOANN

sam's club

Walmart
Supercenter

DEMOGRAPHICS	1 MILE	3 MILES	5 MILES
POPULATION	5,580	51,035	137,942
AVG. HH INCOME	\$110,005	\$105,987	\$107,146
HOUSEHOLDS	1,838	16,296	44,440
CONSUMER SPENDING	\$138.25 M	\$1.18 B	\$3.27 B

- Pad site available for ground lease (approx. location shown above)
- Located at 10th St W & 14 Fwy
- Neighboring-Tenants include Joann, Walmart Supercenter, Sam's Club & Hobby Lobby
- Other retailers in the sub-market include Michael's, TJ Maxx, Ross & Homegoods

 epsteen & associates

FOR MORE INFORMATION, CONTACT EXCLUSIVE AGENTS:

CAMERON CROWNER

ccrowner@epsteen

(310)451-8171 ext. 240

AUSTIN COLE

acole@epsteen.com

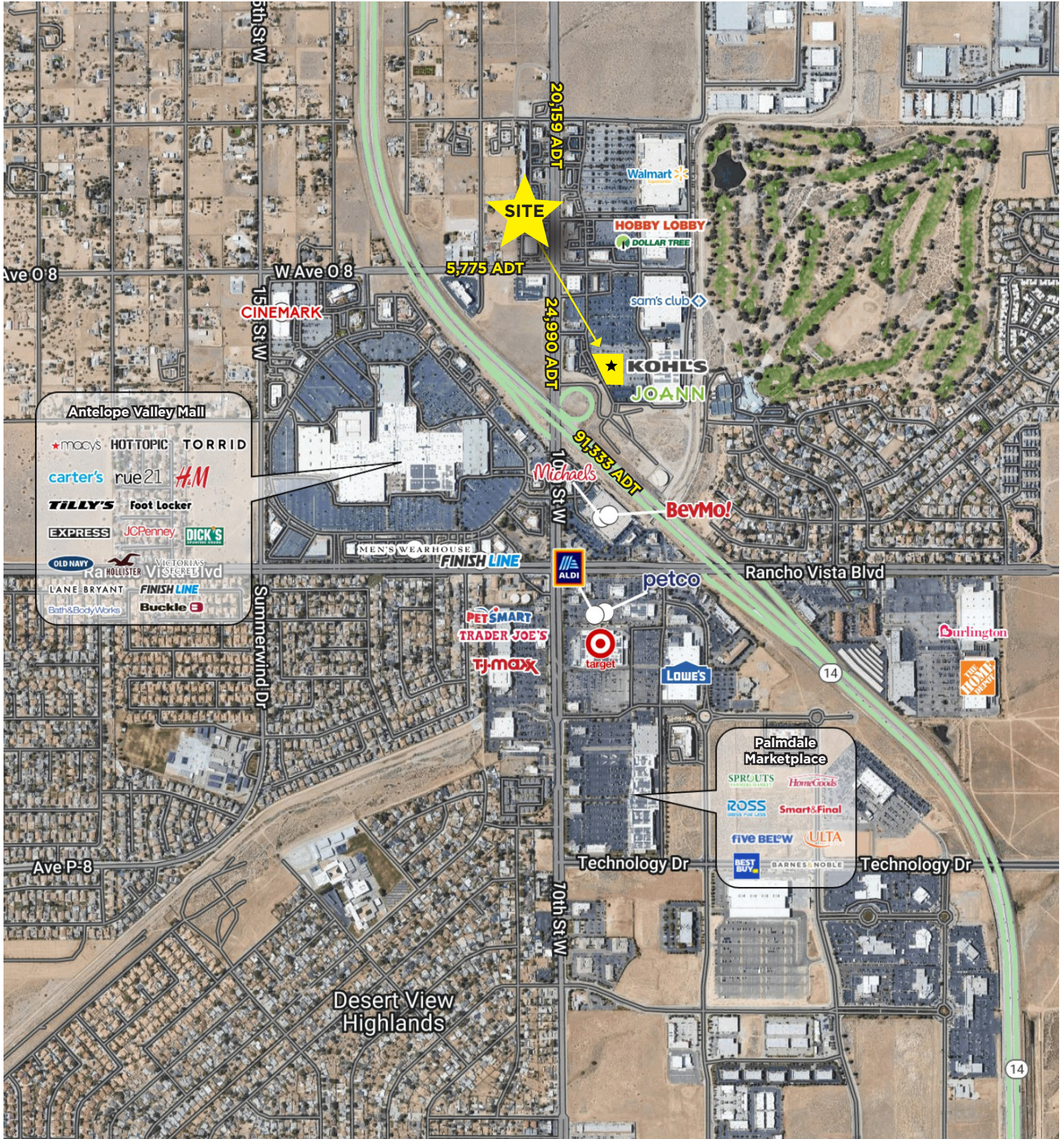
(310)451-8171 ext. 251

CHAINLINKS
RETAIL ADVISORS

The information contained herein has been obtained from sources we deem reliable. While we have no reason to doubt its accuracy, we do not guarantee it. All measurements, facts and actual drawings shown are approximate, subject to change, and should be independently verified by you and may not be relied upon as a precise representation by this office.

KOHL'S ANCHORED PAD SITE

39850 10th St W, Palmdale, CA 93551 (#753)



 epsteen & associates

FOR MORE INFORMATION, CONTACT EXCLUSIVE AGENTS:
CAMERON CROWNER
 ccrowner@epsteen.com
 (310)451-8171 ext. 240

AUSTIN COLE
 acole@epsteen.com
 (310)451-8171 ext. 251

CHAINLINKS
 RETAIL ADVISORS

The information contained herein has been obtained from sources we deem reliable. While we have no reason to doubt its accuracy, we do not guarantee it. All measurements, facts and actual drawings shown are approximate, subject to change, and should be independently verified by you and may not be relied upon as a precise representation by this office.